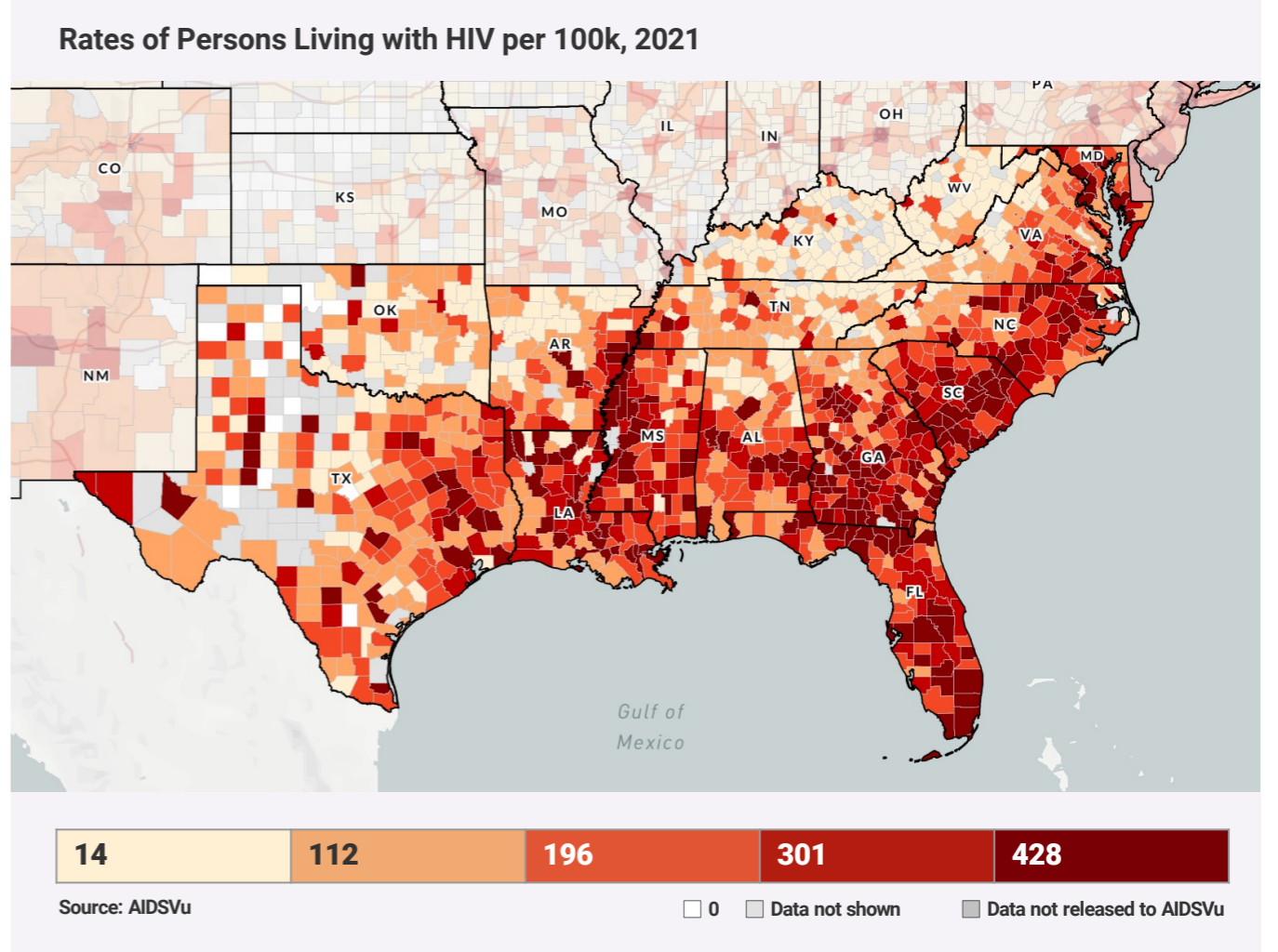
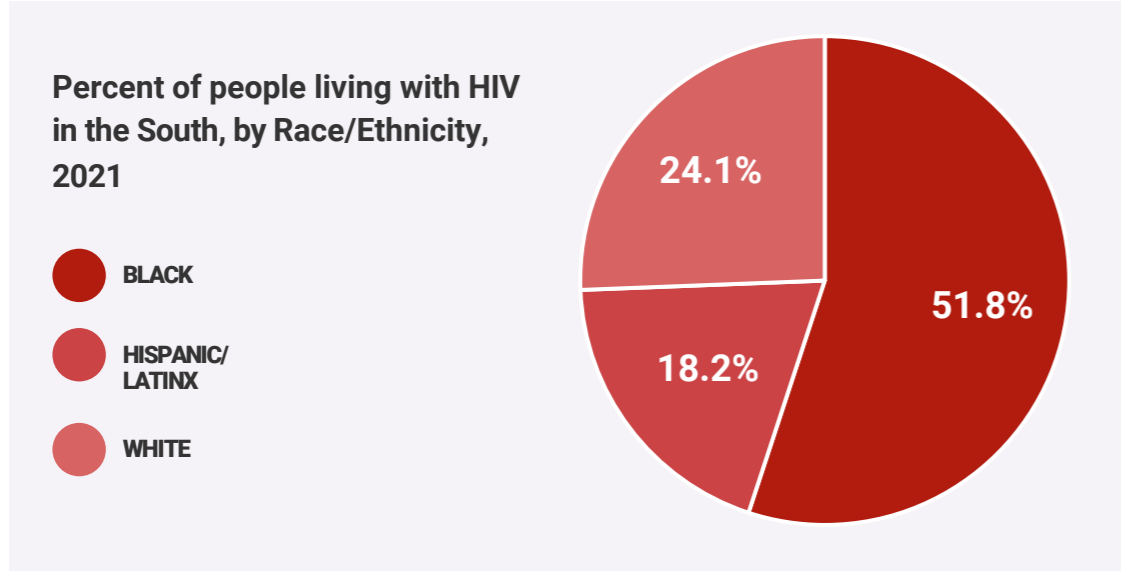


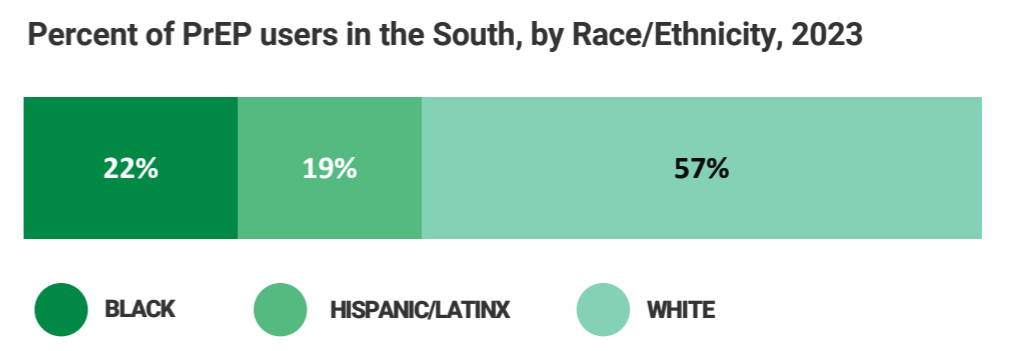
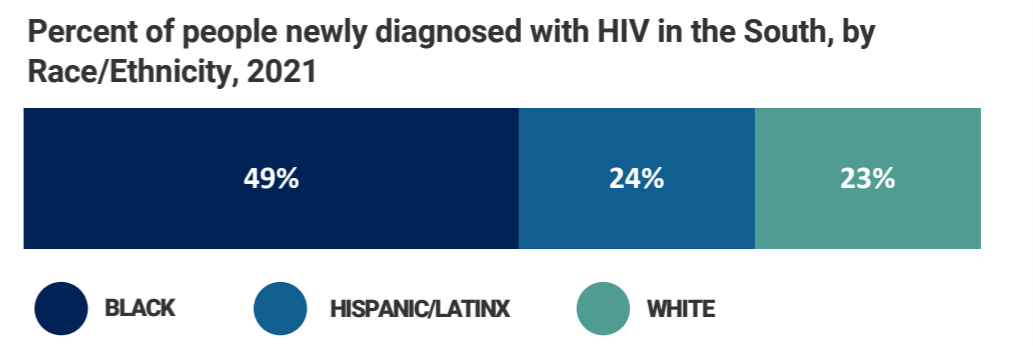
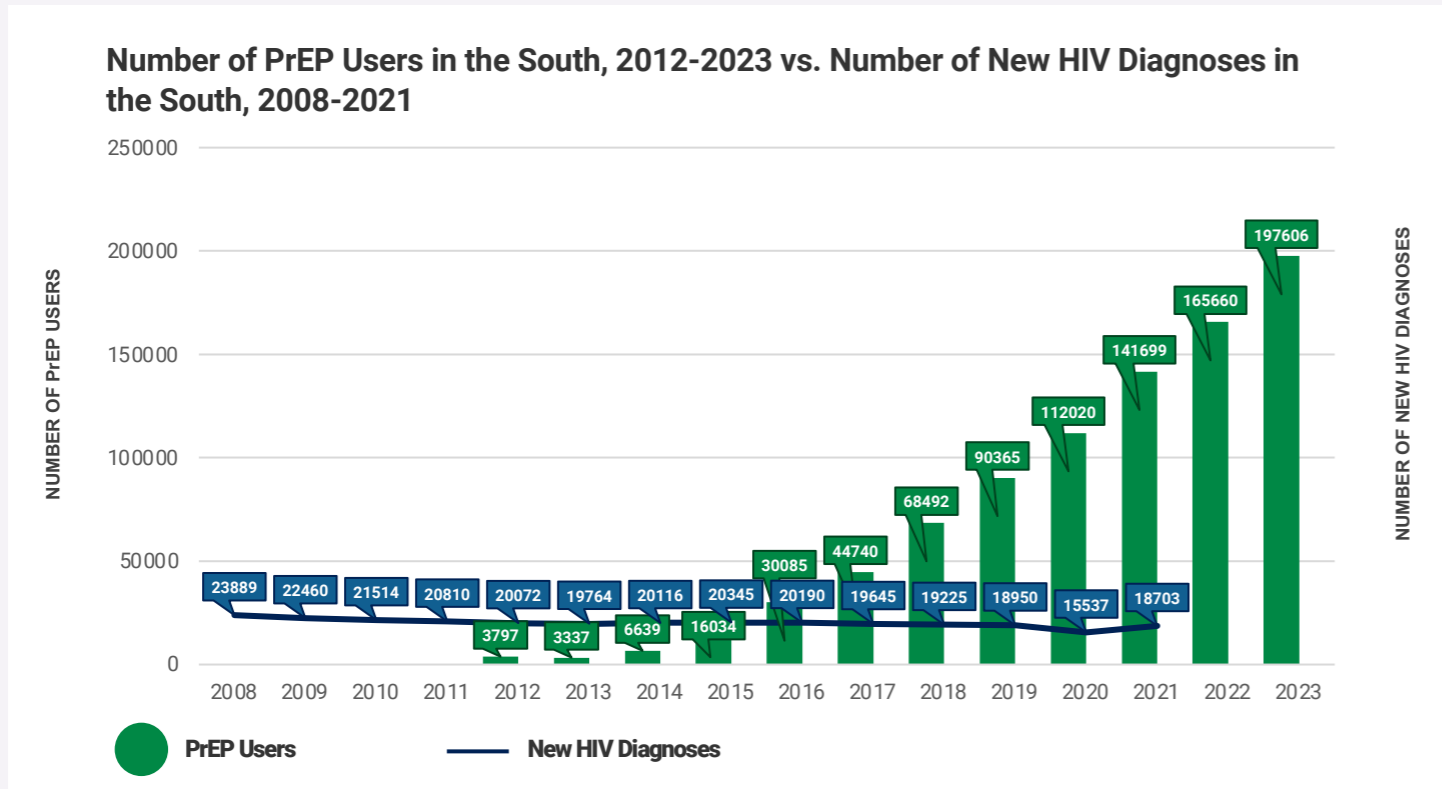
# HIV In The South

In 2021, there were **492,922** people living with HIV in the South. That same year, **18,703** people were newly diagnosed with HIV.



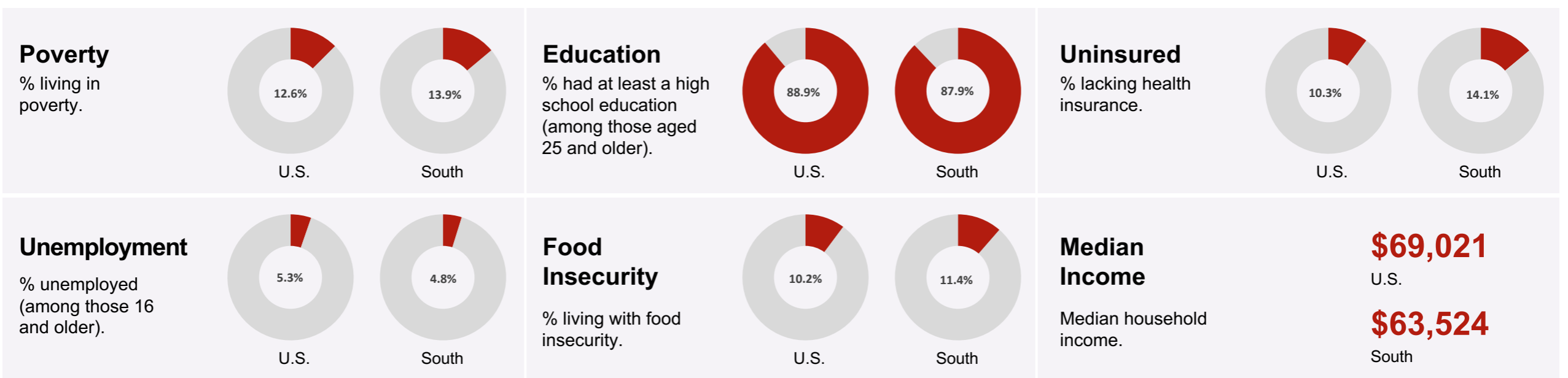
## New HIV Diagnoses & PrEP Use

Pre-exposure prophylaxis, or PrEP, can protect people from acquiring HIV. We know that PrEP works in reducing new HIV diagnoses. Yet, PrEP use is not equitable. For example, **Black people represented half (49%) of new HIV diagnoses in the South, yet were only 21% of PrEP users in the region.**



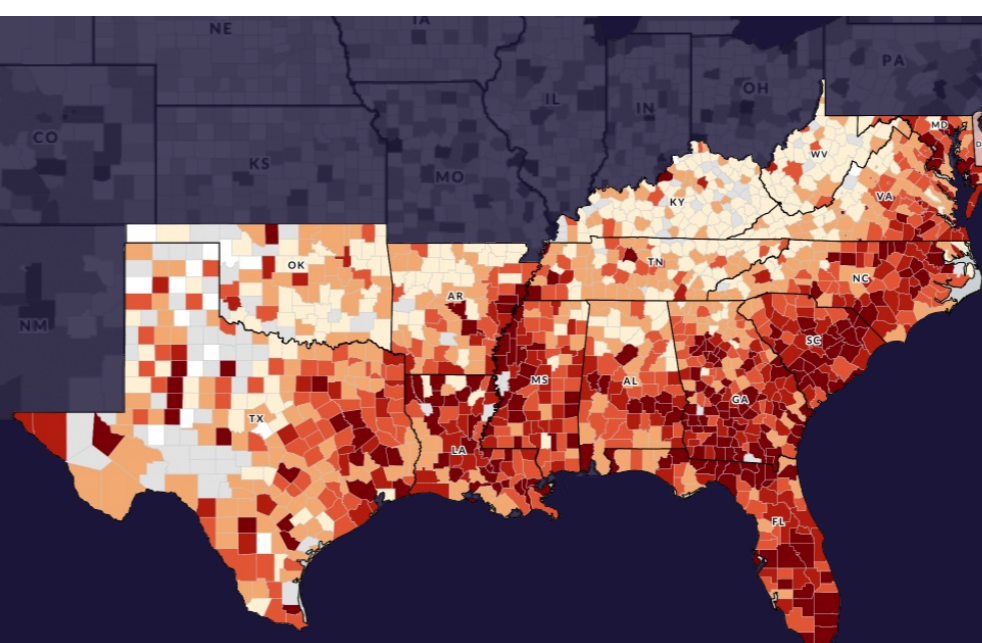
## Social Determinants of Health

In 2021, the **South made up over half (52%) of new HIV diagnoses in the U.S.** Social Determinants of Health such as **poverty, education, lack of insurance, and unemployment** can negatively impact HIV-related health outcomes for people living in the South, especially among people from racial and ethnic minority groups.



# SOUTHERN POLICYMAKER ACADEMY

JULY 30-31 | ATLANTA, GA



DATA PRESENTED BY:



PRESENTED BY:



SPONSORED BY:

